

Valentine's Day

LOWER ELEMENTARY

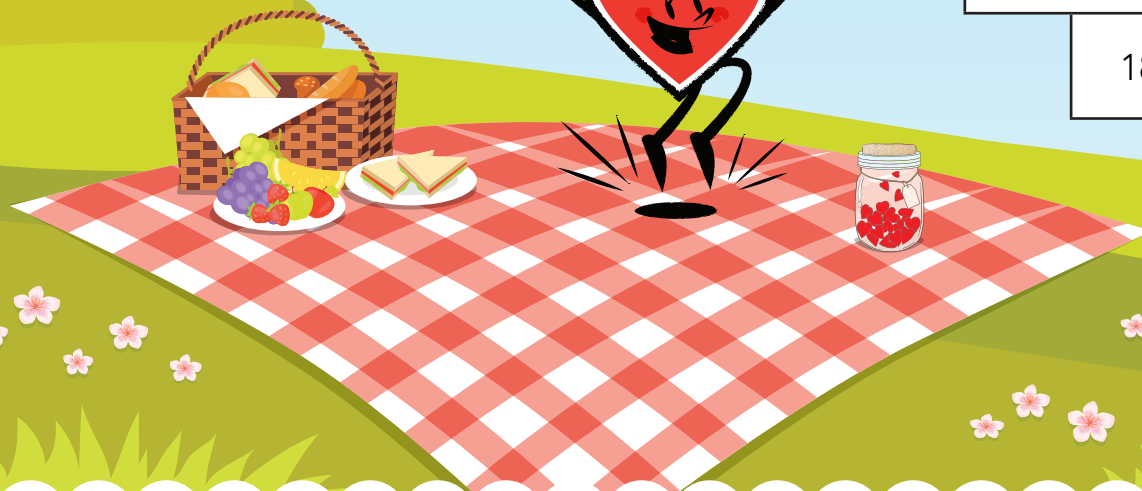
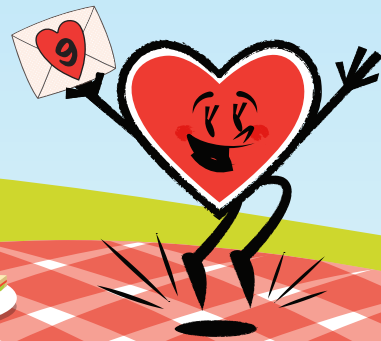
It's Valentine's Day! Ace and Addie made plans with their new friend Lovey to celebrate with a picnic together. Lovey got there early, but Ace and Addie are running late!

Help Ace and Addie find Lovey at their picnic spot by solving all the problems inside the heart, and coloring in the path that has all the same answers.



Start here

8		Half of 18			
12 - 5	3 + 3	27 - 18	6, 9, __		
3 doubled	10	__ + 6 = 15	2 $\frac{1}{2}$ doubled	4	
8	2, __, 6	22 + __ = 30	9	10 - __ = 2	11
11	4 $\frac{1}{2}$ doubled	8	6 + 5 - 2	79	
3 + 6	8, __, 10	Half of 16	4 + 5		
8 - 7	4 + 5	4 + __ = 13			
18 - 11	11				
10					



Valentine's Day

UPPER ELEMENTARY



Start here

$3 \times 5 - 4$		13 doubled			
4	one less from a dozen	$8 + 7 - 6$	20		
$9 \times 2 - 11$	$110 \div 10$	15	$36 - \underline{\quad} = 18$	two less from a dozen	
5	$89 - \underline{\quad} = 78$	7	Quarter of 12	$6 \times 3 - 7$	3
$6 + 25 \div 5$	$6 - 5 + 4$	13	Quarter of 44	$9 + 8 - 6$	
11	$48 \div 8$	$7 + 5 - 4 + 3$	$46 - 24$		
10	$5\frac{1}{2}$ doubled	$\underline{\quad} + 27 = 38$	$8 \times 2 - 6$	20	
5	$21 \div 3$	$12\frac{1}{2}$ doubled	8		
$2 + 12 - 6$		7			
					12

It's Valentine's Day! Ace and Addie made plans with their new friend Lovey to celebrate with a picnic together. Lovey got there early, but Ace and Addie are running late!

Help Ace and Addie find Lovey at their picnic spot by solving all the problems inside the heart, and coloring in the path that has all the same answers.

